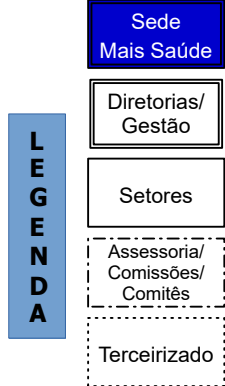
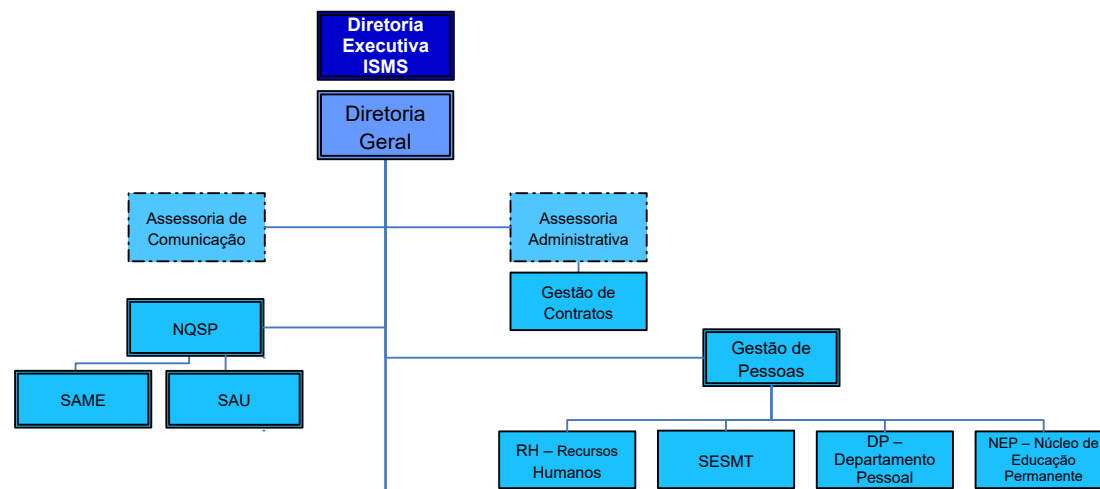
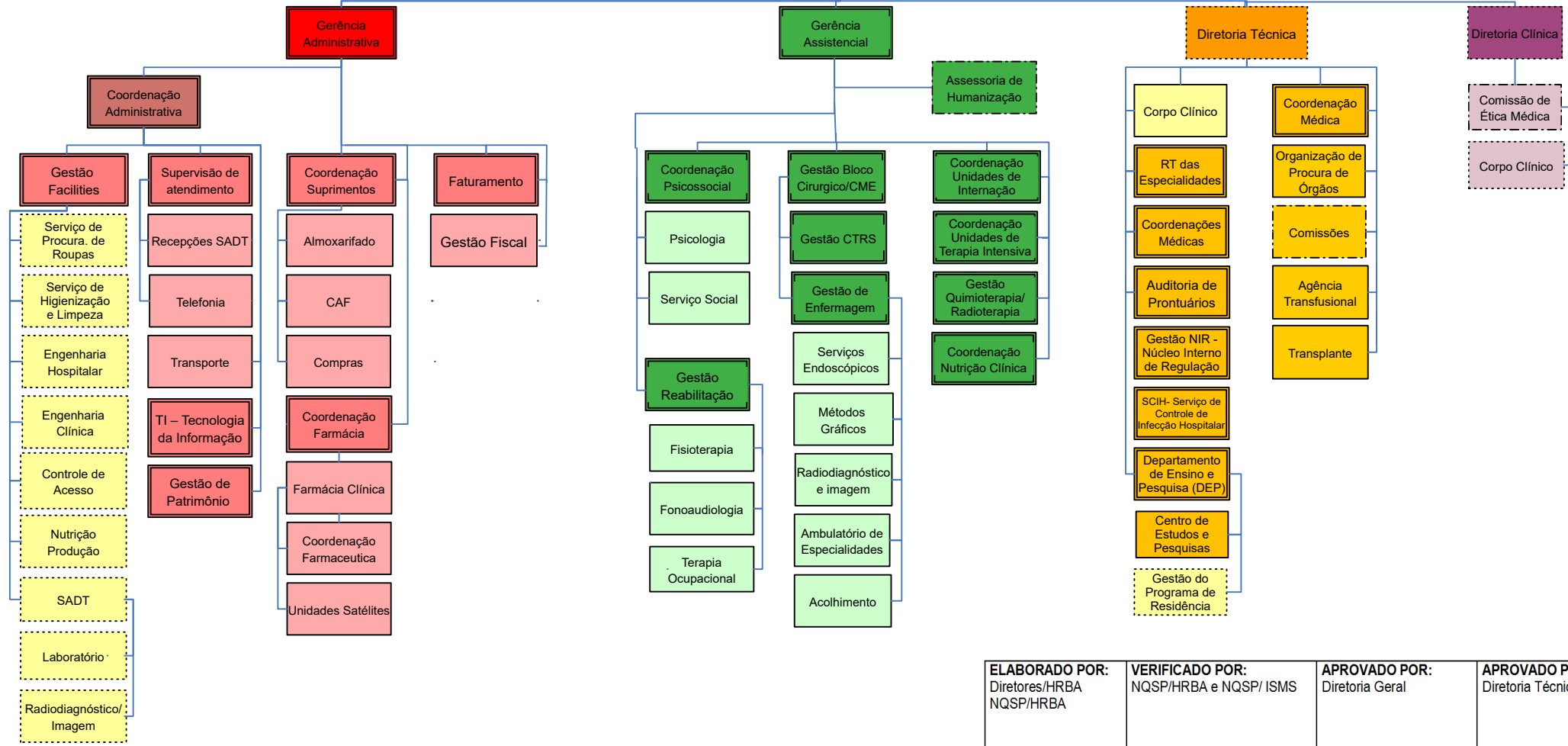


Organograma

Hospital Regional do Baixo Amazonas do Pará – Dr. Waldemar Penna



FONTE: MG.HRBA.DIR.001 – Gestão do HRBA - Versão 005



ELABORADO POR: Diretores/HRBA NQSP/HRBA	VERIFICADO POR: NQSP/HRBA e NQSP/ ISMS	APROVADO POR: Diretoria Geral	APROVADO POR: Diretoria Técnica
---	---	----------------------------------	------------------------------------